

Servo Motors and Drives

SDA Series 100W~3.5KW



INDEX

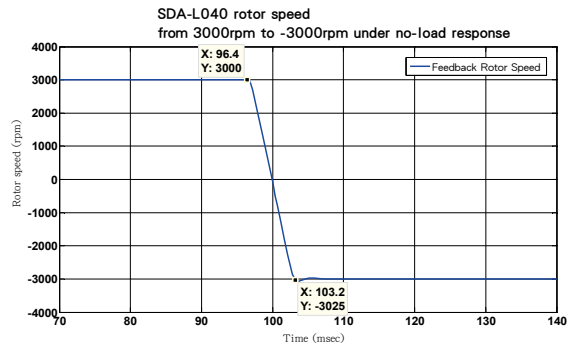
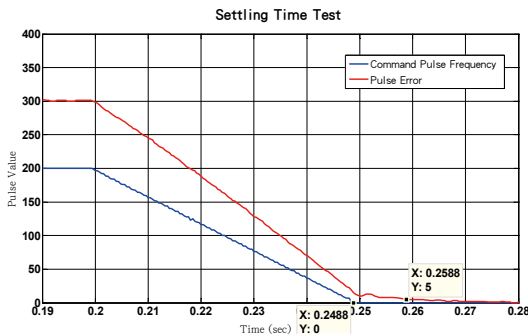
Features	2
Model Description	4
Product Corresponding Table	5
Connections with Peripheral Equipment	6
Servo Drives Appearance and Panel Descriptions	7
Standard Wiring Diagram	8
Servo Drives Specifications	12
Servo Motors Specifications	13
Servo Motors Torque Characteristic	14
Motors Shaft Dimensions	15
Electromagnetic Brake Specifications	15
Servo Drives Dimensions	16
Servo Motors Dimensions	18
Optional Cables and Connectors	20



Features

High speed and high-accuracy

- High speed frequency response Drives (490Hz) and high command settling time (less than 1.0ms).
- At no load situation, when the motor speed is between 3000rpm to -3000rpm, the acceleration time is 6.9ms.



Test example of 400W

Multiple control modes for various applications

- Position control mode, speed control mode, torque control mode, and single-axis position control mode.
- Different control modes could be set as hybrid mode via switching I/O.

Built-in single-axis control mode

- Build-in linear and S curve acceleration/deceleration parameters.
- Various home position return modes.

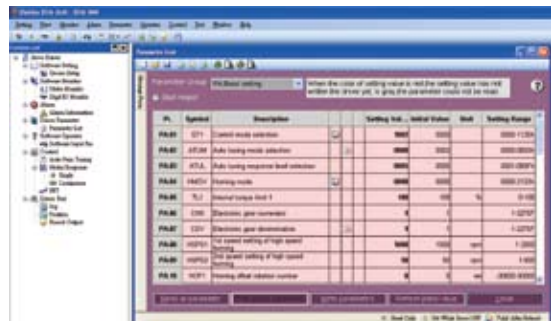
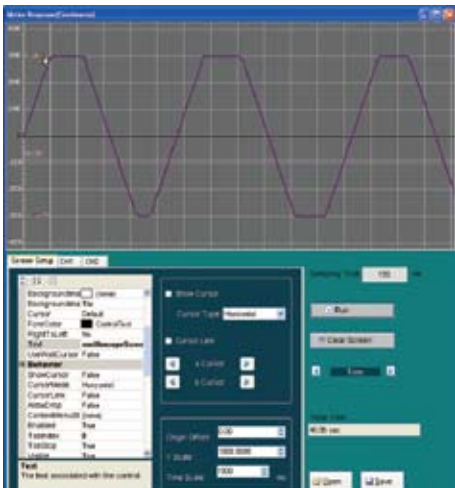
Modbus communication and USB interface

- Support Modbus communication protocol.
- Support USB communication.
- RS232/RS485 interface.
- Support baud rate from 4800 to 115200 bps.



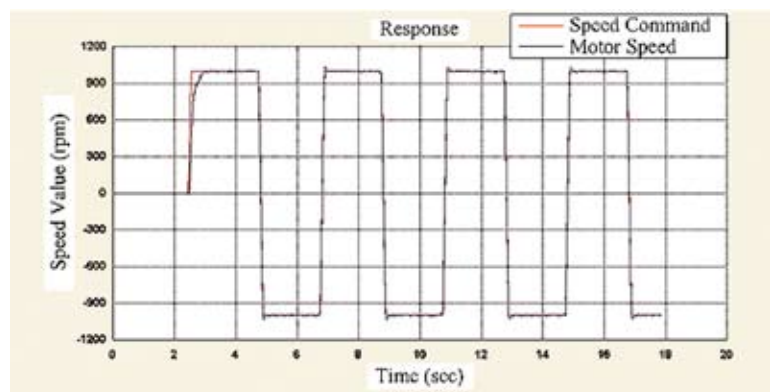
Highly potent servo software

- A variety of functions are available for the customers.
- Status monitoring.
- Parameter data reading and writing; file reading and saving, output printing.
- Digital I/O monitoring and internal digital input controlling.
- Jog testing and position testing.
- Automatic inertia estimation and gain calculation.
- FFT resonance sweep function.
- Oscilloscope long-term status capturing function.



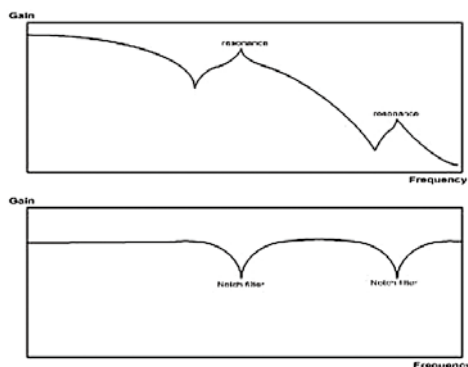
Auto tuning function

- There is an automatic on-line control theory to achieve a stable control.



Mechanical resonance filter setup

- The user can set up two mechanical resonance points to suppress mechanical vibration.



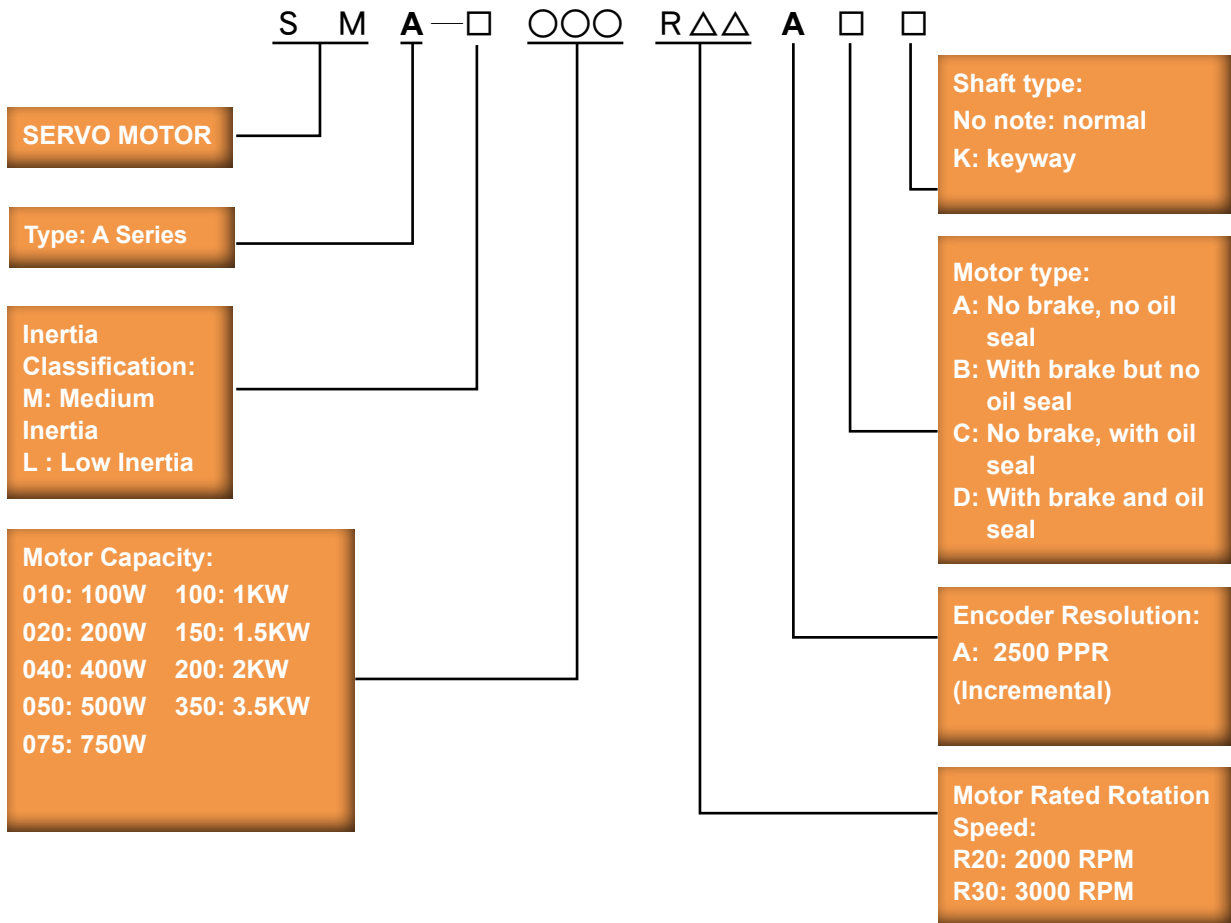
CE certification

- EMC
 - IEC 61800-3
 - IEC 61800-4
- Safety
 - IEC 61800-5-1

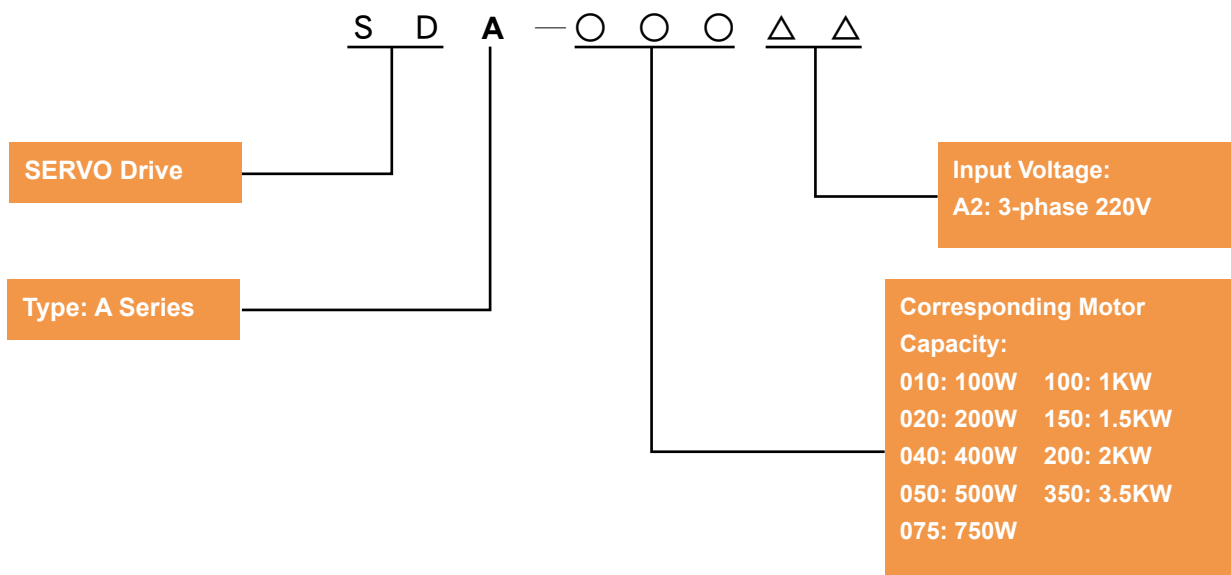


Model Description




■ Servo Motors



■ Servo Drives



Product Corresponding Table

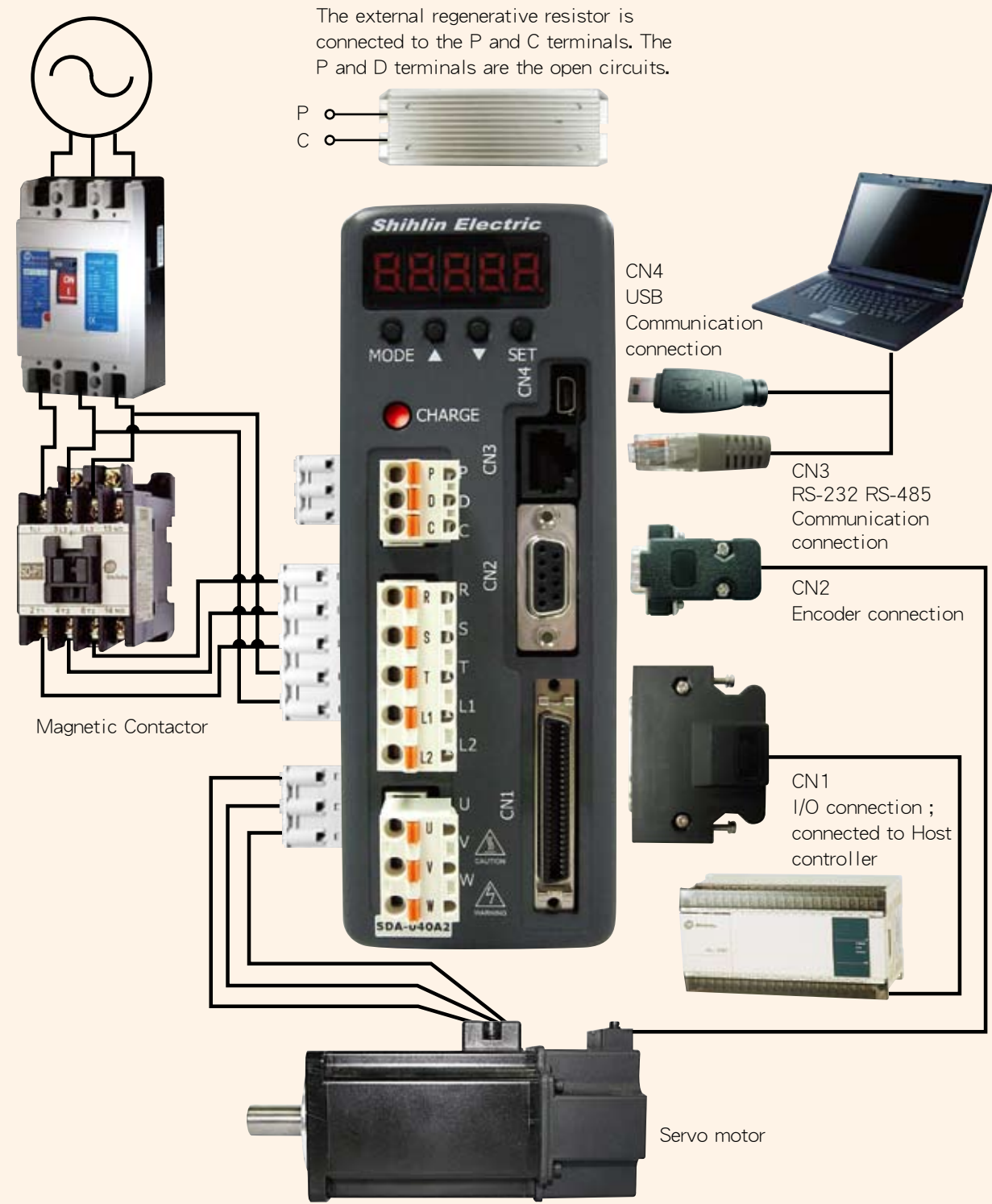
Servo Drives									
Capacity	100W	200W	400W	500W	750W	1KW	1.5KW	2KW	3.5KW
Model	SDA-010A2	SDA-020A2	SDA-040A2	SDA-050A2	SDA-075A2	SDA-100A2	SDA-150A2	SDA-200A2	SDA-350A2
Appearance									

Servo Motors						
Low Inertia	Capacity	100W	200W	400W	750W	
	Model	SMA-L010R30AA	SMA-L020R30AA	SMA-L040R30AA	SMA-L075R30AA	
	Appearance					
Medium Inertia	Capacity	500W	1KW	1.5KW	2KW	3.5KW
	Model	SMA-M050R20AC	SMA-M100R20AC	SMA-M150R20AC	SMA-M200R20AC	SMA-M350R20AC
	Appearance					

Connections with Peripheral Equipment

Power Supply:

3 phase 200V to 230V



Servo Drive Appearance and Panel Descriptions

Power Indicator Light:

If the light is on, it indicates that the servo drive still has a high voltage.

Internal/External Regenerative Resistor :

- a) When using the external regenerative resistor, connect P and C terminals to the resistor, and make P and D the open circuits.
- b) When using the internal regenerative resistor, make P and C terminals the open circuits, and make P and D terminals the short circuits.

Main Circuit Power :

Connect R, S, and T to commercial electrical power of AC 200 – 230V and 50/60Hz.

Control Circuit Power :

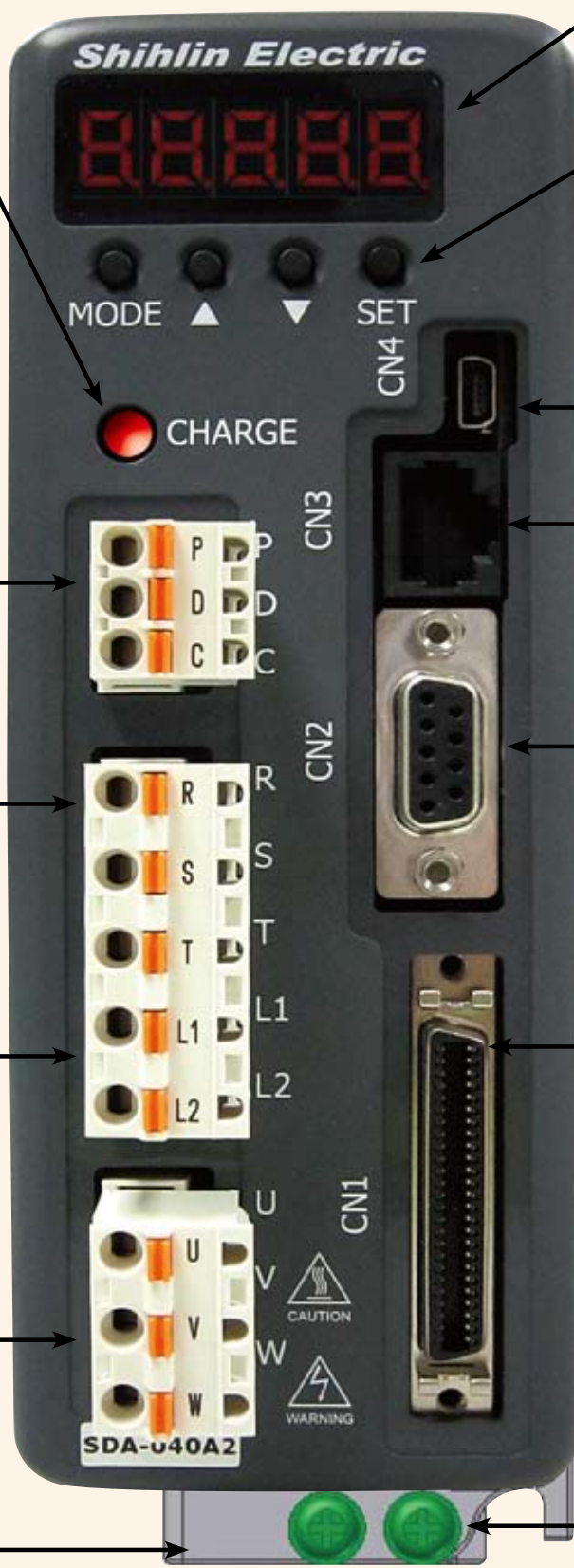
L 1 and L 2 for single -phase AC 200 – 230V , 50/60 Hz Power Supply

Servo Motor Output :

Connect to U, V , and W ports of the motor power. C cannot be connected to the main circuit power. Wrong connection can cause servo drive damages.

Heatsink :

Fix the servo drive and heatsink the temperature.



LED Display :

The 5-digit, 7-segment LED displays the alarm code, servo status, parameters, etc

Operation Panel :

Operation status includes setups for function, parameter, etc.
 MODE : Mode options
 ▲ : Increase value on the display panel
 ▼ : Decrease value on the display panel
 SET : Set: To set data

USB Connection :

Connect to PC and servo drive

RS-232 / RS-485 Connection :

Connect to PC and servo drive

Encoder Connector :

Connect to the encoder of the servo motor

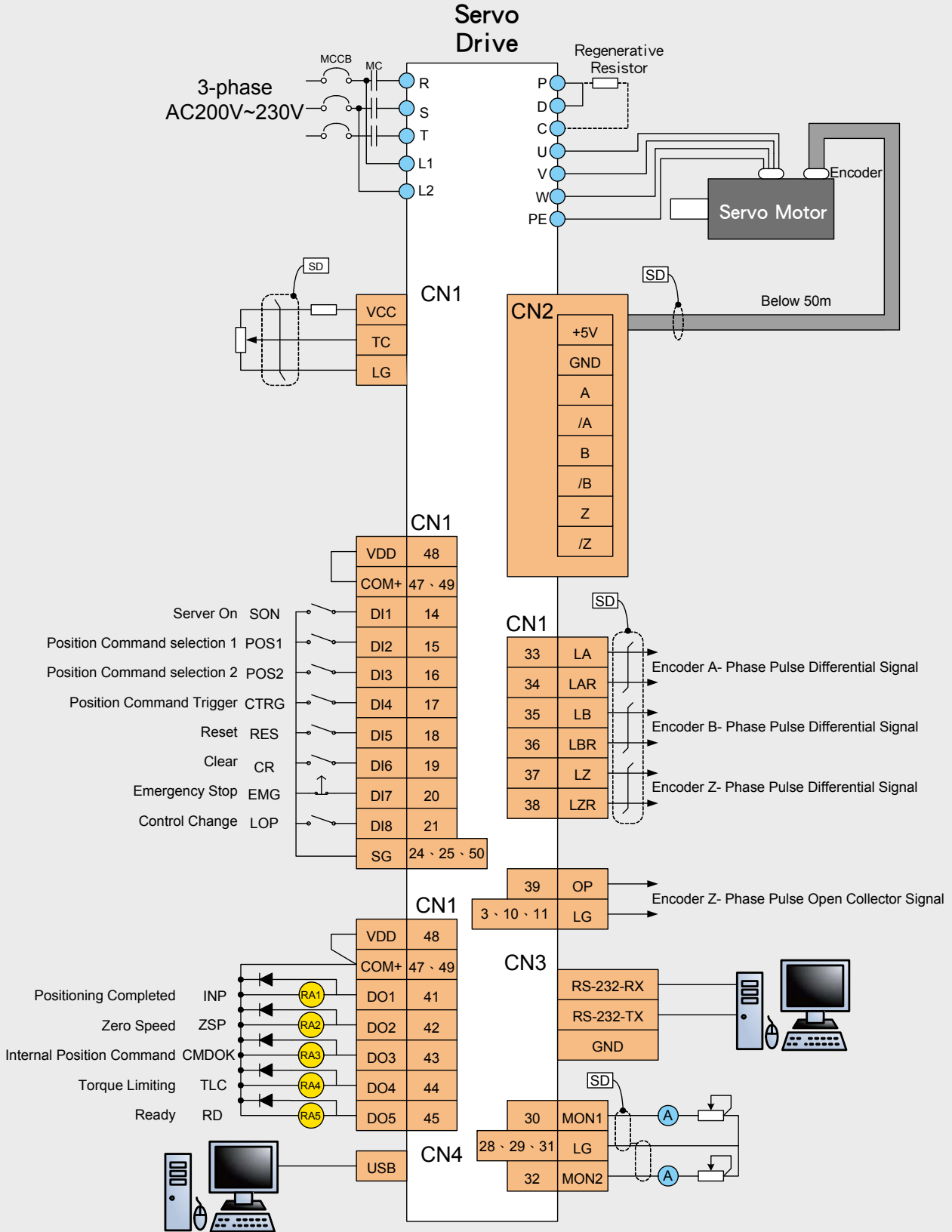
Control Connection :

Connect to the external control I/O connector or PLC

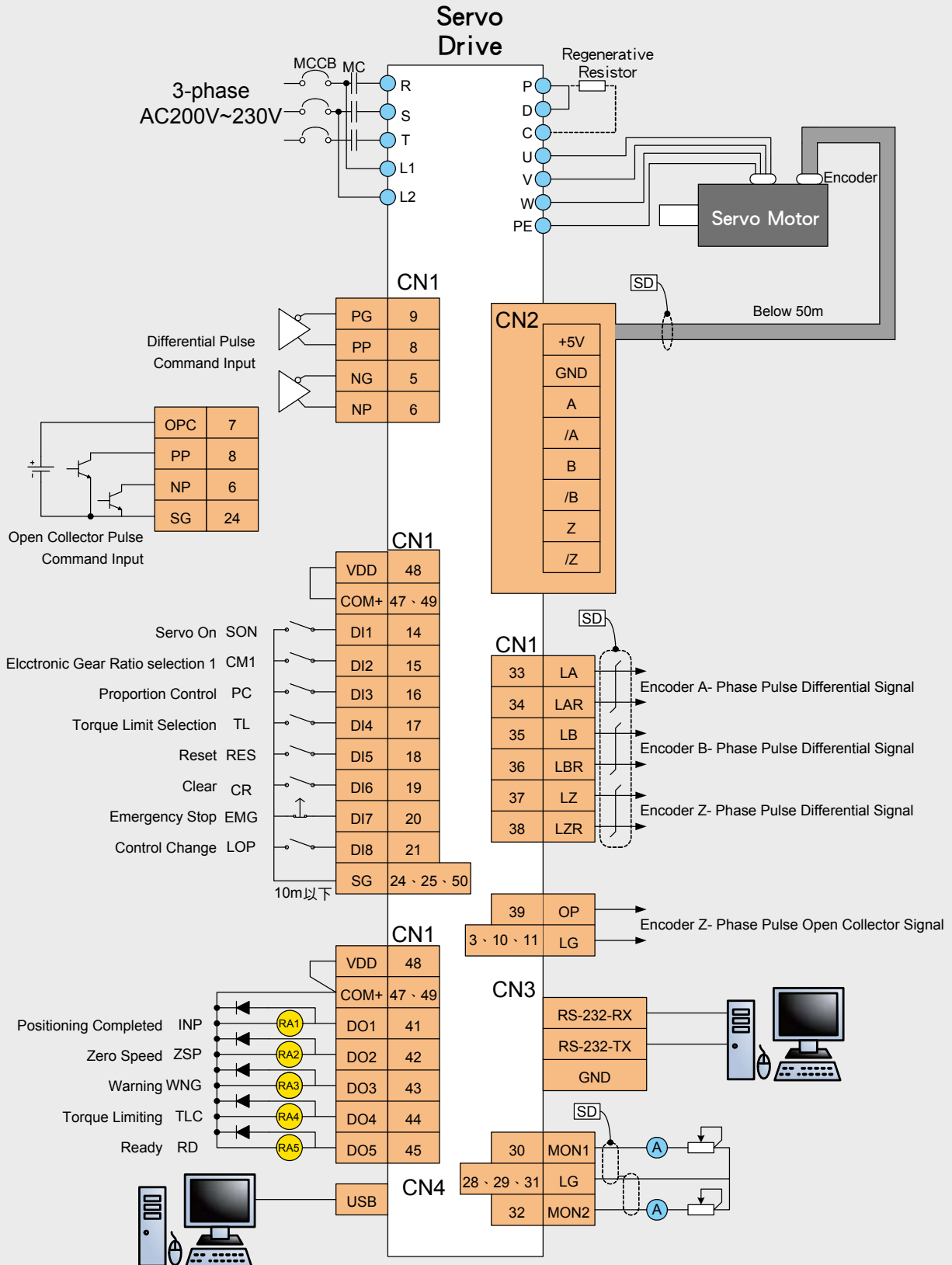
Ground

Standard Wiring Diagram

■ Built-in single-axis position control (PR)

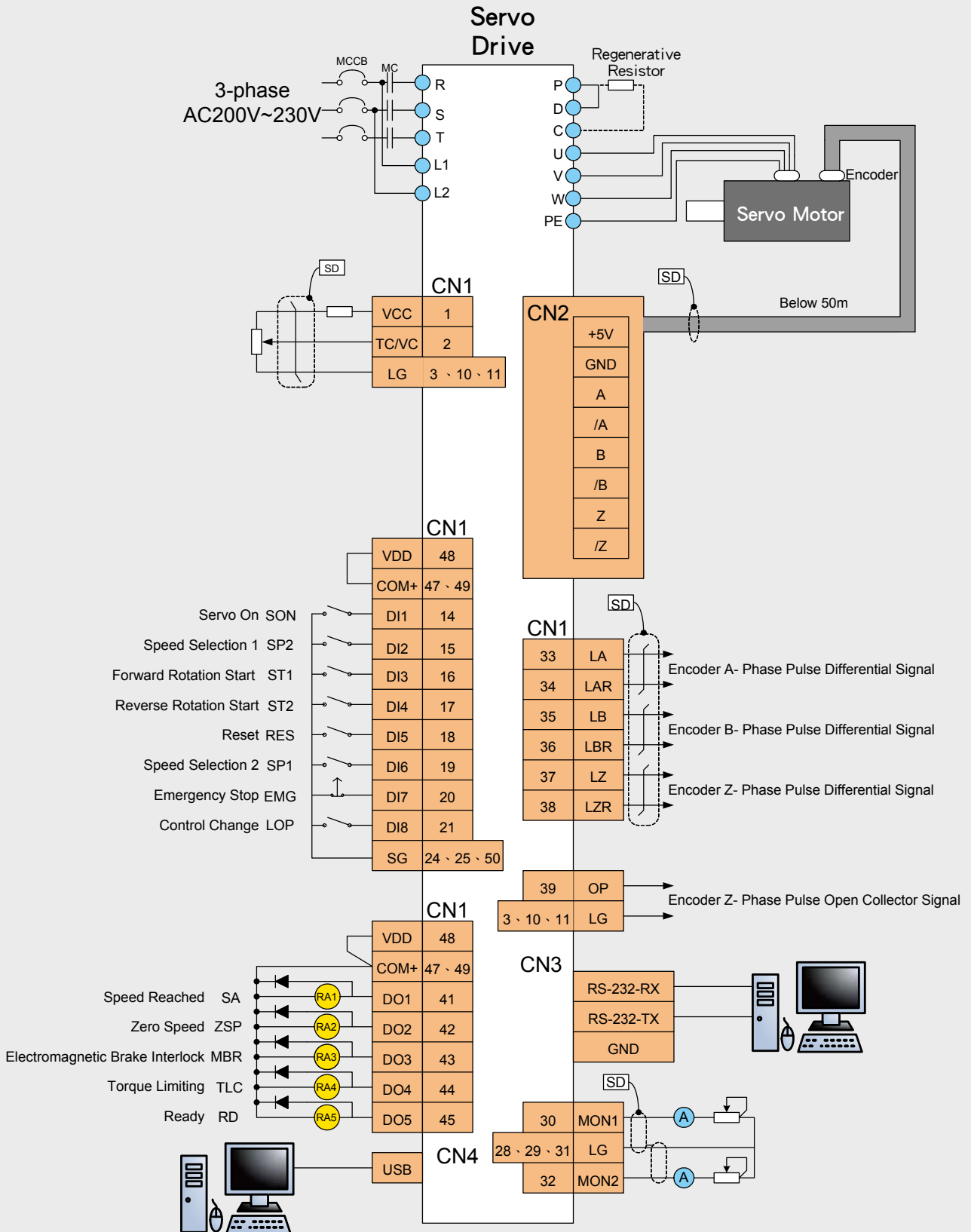


Position control (PT)

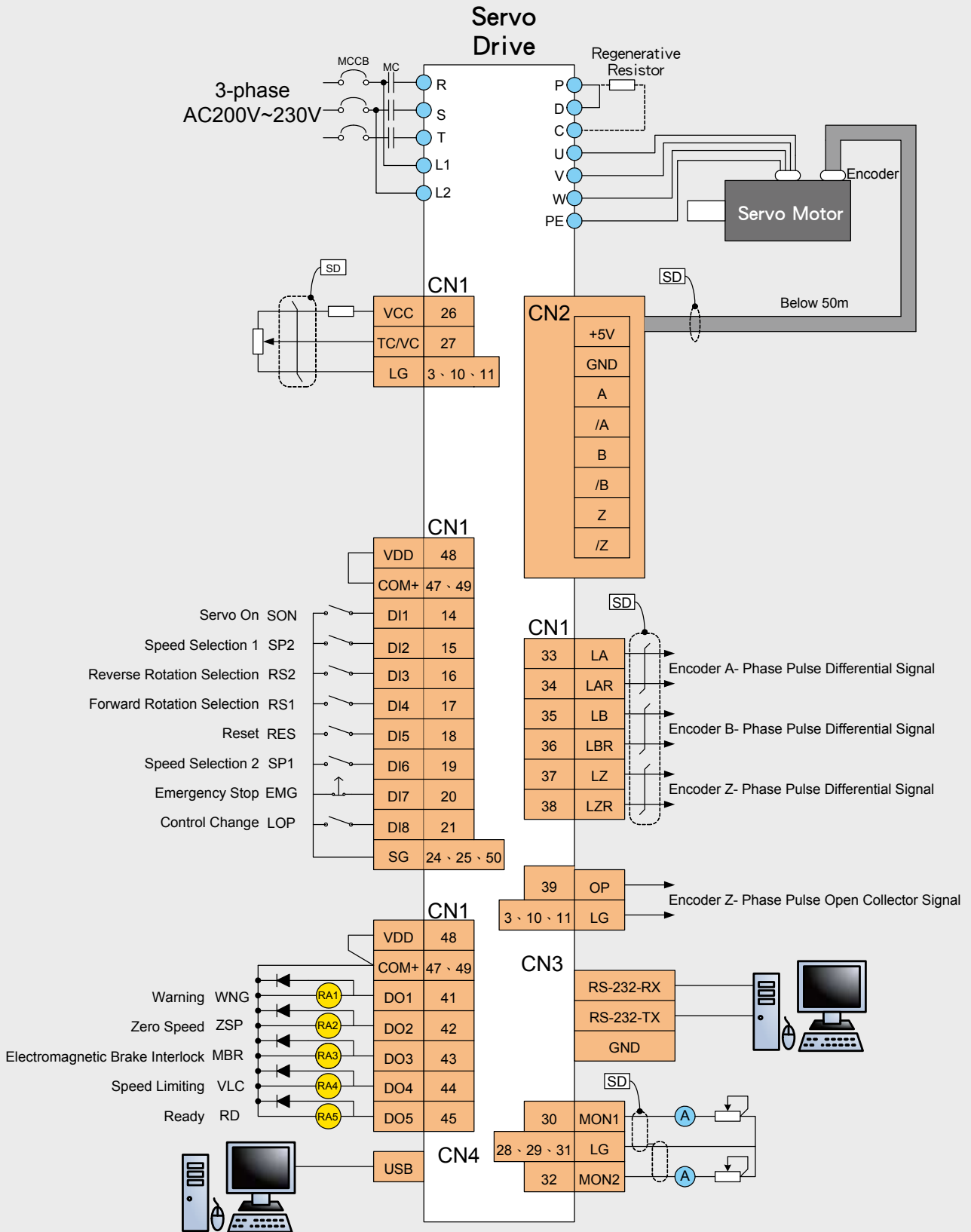


Standard Wiring Diagram

Speed control (S)




Torque control (T)



Servo Drives Specifications

Servo Drives Model SDA-□□□A2		010	020	040	050	075	100	150	200	350	
Recommend Servo Motors Model SMA-□□□□		L010	L020	L040	M050	L075	M100	M150	M200	M350	
Motor Power		100W	200W	400W	500W	750W	1KW	1.5KW	2KW	3.5KW	
Main Circuit Power	Voltage / Frequency	3-phase 200~230VAC 50/60Hz or 1-phase 230VAC 50/60Hz					3-phase 200~230VAC 50/60Hz				
	Permissible Voltage Fluctuation	3-phase 170~230VAC 50/60Hz or 1-phase 207~253VAC 50/60Hz					3-phase 170~253VAC 50/60Hz				
	Permissible Frequency Fluctuation	Maximum + 5%									
Control Circuit Power	Voltage / Frequency	1-phase 200~230VAC 50/60Hz									
	Permissible Voltage Fluctuation	1-phase 170~253VAC 50/60Hz									
	Permissible Frequency Fluctuation	Maximum + 5%									
	Power Consumption (W)	30									
Control Method		3-phase full wave rectify, IGBT-PWM controlled (SVPWM drive)									
Dynamic Brake		Built-in									
Protective Functions		Overcurrent, regenerative overvoltage, overload protection, fan failure protection, output short circuit protection, encoder error protection, abnormal regeneration protection, low voltage / instantaneous power failure protection, overspeed protection, excessive error protection									
Encoder Feedback		2500ppr (10000 resolution) increment encoder									
Communication Interface		RS232/RS485(MODBUS), USB									
Position Control Mode	Maximum Output Pulse Frequency	500kpps (Line Driver), 200kpps (Open Collector)									
	Pulse Command	CCW Pulse train +CW Pulse train ; Pulse train + Symbols ; A-, B-phase pulse train									
	Command Type	External pulse control / Internal register setup									
	Command Smoothing	Low-pass filter / Linear / S curve									
	Command Pulse Multiplying factor	Electronic gear A/B ratio A : 1~32767, B : 1~32767, 1/50 < A/B < 200									
	In-Position range setting	0~±10000pulses									
	Error Excessive	±3 rotations									
	Torque Limit	Internal parameter setup or external analog Input setup (0~+10VDC/Maximum torque)									
	Feedforward Compensation	Internal parameter setup 0~200%									
Speed Control Mode	Speed Control Range	Analogue speed command 1:2000; Internal speed command 1:5000									
	Command Type	External analog voltage input / Internal register setup									
	Command Smoothing	Low-pass filter / Linear acceleration and deceleration curve / S curve									
	Analog Speed Command Input	0~±10VDC/Rated speed (input impedance: 10~12kΩ)									
	Speed Fluctuation Rate	Load fluctuation 0~100%: ± 10% (maximum); power fluctuation ±10%: ± 0.5% (maximum); Ambient temperature 0°C~55°C: ± 0.5% (maximum) (Analog speed command)									
	Torque Limit	Internal parameter setup or external analog Input setup (0~+10VDC/Maximum torque)									
	Bandwidth	Maximum 490Hz									
Torque Limitation Mode	Command Type	External analog voltage input									
	Command Smoothing	Low-pass filter									
	Analog Torque Command Input	0~±10VDC/Maximum torque (input impedance: 10~12kΩ)									
	Speed Limit	Internal parameter setup or external analog Input setup (0~+10VDC/Maximum speed)									
Input and Output Signals	Digital Input	Servo on, forward and backward inhibit limits, pulse error clear, torque direction selection, speed command selection, positioning command selection, forward and backward rotation direction selection, proportion control switching, torque limit switching, abnormal alarm reset, emergency stop, control mode switching, electric gear ratio selection, gain switching									
	Digital Output	Torque limit reached, speed limit reached, servo ready, zero speed reached, position reached, speed reached, alarm signal, Homing completed									
	Analog Input	Analog speed command / limit, analog torque command / limit									
	Analog Output	Command pulse frequency, pulse error, current command, DC bus voltage, servo motor speed, torque value									
Cooling Method		Natural cooling, open (IP20)					Fan cooling, open (IP20)				
Environment	Temperature	0°C ~ 55°C (Force air circulation in the surrounding area if the temperature goes beyond 45 °C); Storage: -20~65°C (non freezing)									
	Humidity	Maximum 90% RH (non condensing); Storage: Below 90% RH (non condensing)									
	Installation Location	Indoor (avoid direct sun light); no corrosive gas, no flammable gas, no oil mist or dust									
	Altitude	Between sea level and 1000 m									
	Vibration	Maximum 5.9 m/s ²									
Weight (Kg)		1.3			1.6			2.4			

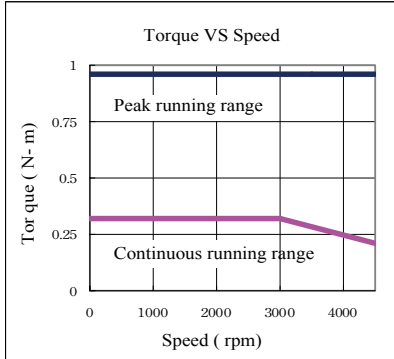
Servo Motors Specifications

Servo Motors Series		Low Inertia				Medium Inertia				
SMA-□□□□		L010	L020	L040	L075	M050	M100	M150	M200	M350
Power facility capacity (kVA)		0.3	0.5	0.9	1.3	1.0	1.7	2.5	3.5	5.5
Rated output (W)		100	200	400	750	0.5K	1K	1.5K	2.0K	3.5K
Rated torque (N · m)		0.32	0.64	1.27	2.4	2.39	4.78	7.16	9.55	16.7
Maximum torque (N · m)		0.96	1.92	3.81	7.2	7.16	14.4	21.6	28.5	50.1
Rated speed (r/min)		3000				2000				
Maximum speed (r/min)		4500				3000			2500	
Permissible instantaneous Speed (r/min)		5175				3450			2850	
Rated power ratio (kW/s)		18.29	19.69	46.08	47.21	8.6	18.2	27.7	23.5	37.3
Rated current (A)		0.9	1.4	2.4	4.9	3.0	5.8	8.5	10	16
Maximum current (A)		2.7	4.2	7.2	14.7	9	17.4	25.5	30	48
Moment of Inertia J (x10-4kg · m ²) () is with electromagnetic brake motor.		0.055 (0.058)	0.204 (0.224)	0.335 (0.355)	1.203 (1.245)	6.59 (8.55)	12.56 (14.54)	18.52 (20.61)	38.8 (49.2)	74.8 (85.2)
Insulation class		F								
Speed and Position Detector		2500ppr								
Environment	Enclosure (IP)	65 (Note 1)								
	Working temperature	0~40°C								
	Storage humidity	Under 80%Rh (non freezing)								
	Storage temperature	-15~70°C								
	Storage humidity	Under 90%Rh (non freezing)								
	Vibration class	V-15								
	Vibration Resistance	x, y : 49 m/s ²				x, y : 24.5 m/s ²				
	Altitude	1,000 m								
Weight (Kg) () is with electromagnetic braker.		0.55 (0.75)	1.01 (1.44)	1.46 (1.89)	2.89 (3.63)	4.8 (6.6)	6.9 (8.7)	9.0 (10.8)	11.6 (16.9)	17.7 (23.0)
Safety Certification										

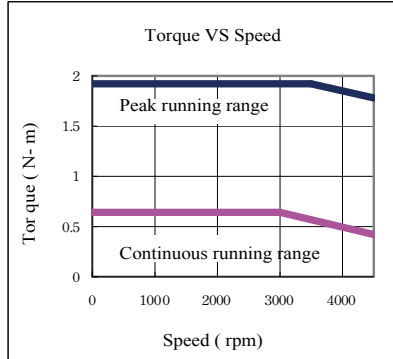
Note 1: The shaft-through portion is excluded

Servo Motors Torque Characteristic

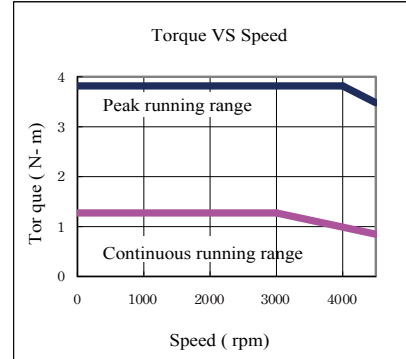
[SMA-L010]



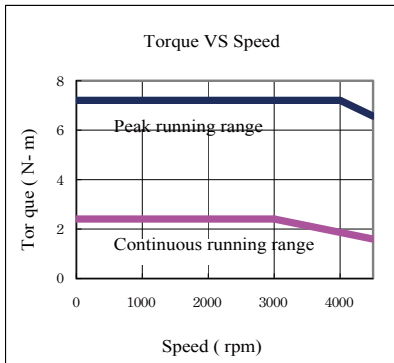
[SMA-L020]



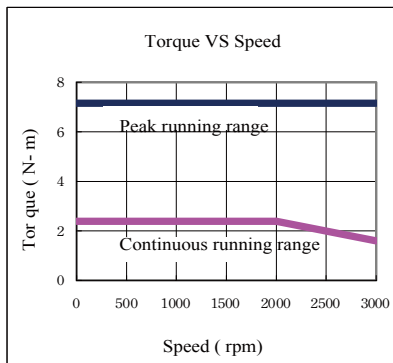
[SMA-L040]



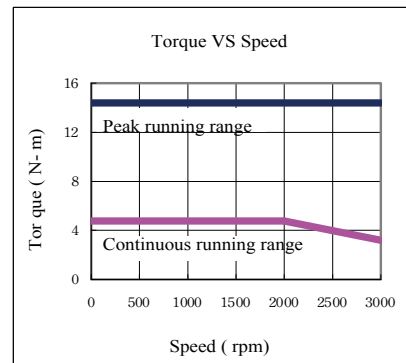
[SMA-L075]



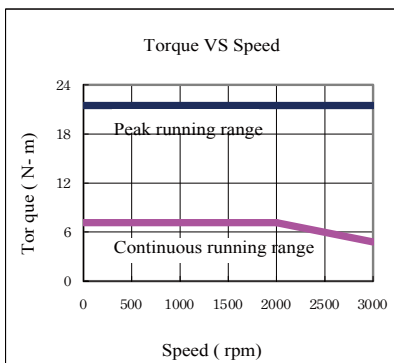
[SMA-M050]



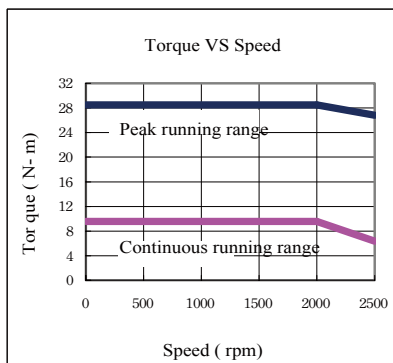
[SMA-M100]



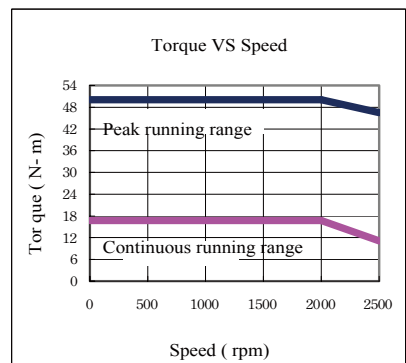
[SMA-M150]



[SMA-M200]



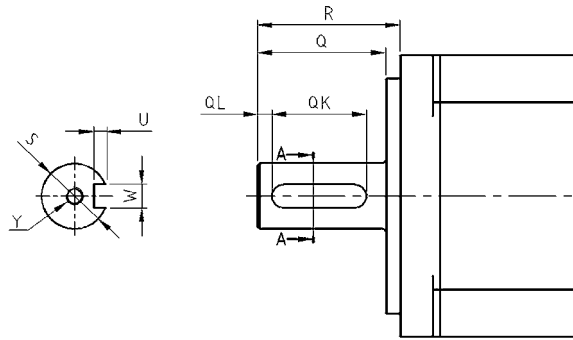
[SMA-M350]



※ : For 3-phase 220VAC.

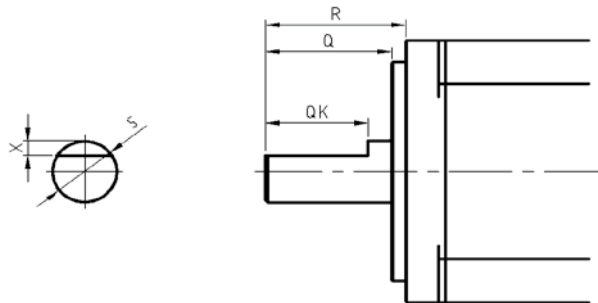
Motors Shaft Dimensions

Key way



Motor models	Dimensions								
	S	R	Q	QK	QL	W	U	Y	
SMA-L020(B)\L040(B)	ϕ 14h6	30	27	20	3	5 ⁰ _{-0.03}	3	M4 Depth 15	
SMA-L075(B)	ϕ 19h6	40	37	25	5	6 ⁰ _{-0.03}	3.5	M5 Depth 20	
SMA-M050(B)\M100(B)\M150(B)	ϕ 24h6	55	52	35	5	8 ⁰ _{-0.036}	4	M8 Depth 20	
SMA-M200(B)\M350(B)	ϕ 35h6	78	75	55	5	10 ⁰ _{-0.036}	5	M8 Depth 20	

D-cut



Motor models	Dimensions				
	S	X	R	Q	QK
SMA-L010(B)	ϕ 8h6	1	25	22.5	20.5

Electromagnetic Brake Specifications

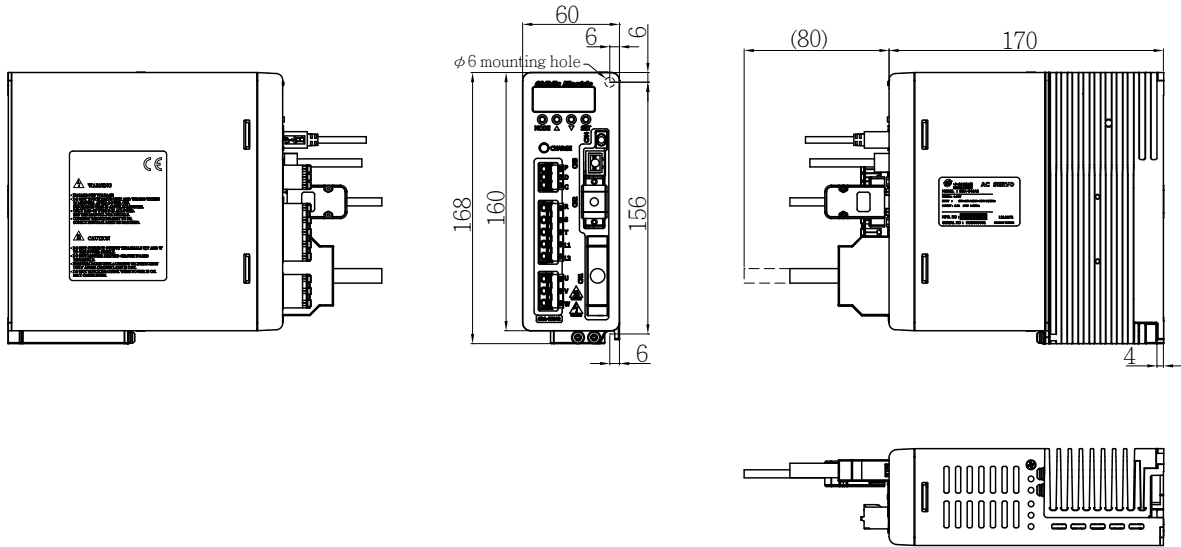
Motor models	SMA Series				
	L010B	L020B/L040B	L075B	M050B/M100B/M150B	M200B/M350B
Electromagnetic brake types	Spring-action safety brake				
Rated voltage (V)	DC 24V 0-10 %				
Power consumption (W)	6.3	7.9	8.6	19.3	34
Static friction torque (N · m)	0.3	1.3	2.4	8.5	45

! **Note :** The electromagnetic brake is used only for safety maintenance. Use it only when the motor is OFF. Do not use it as a motor deceleration brake.

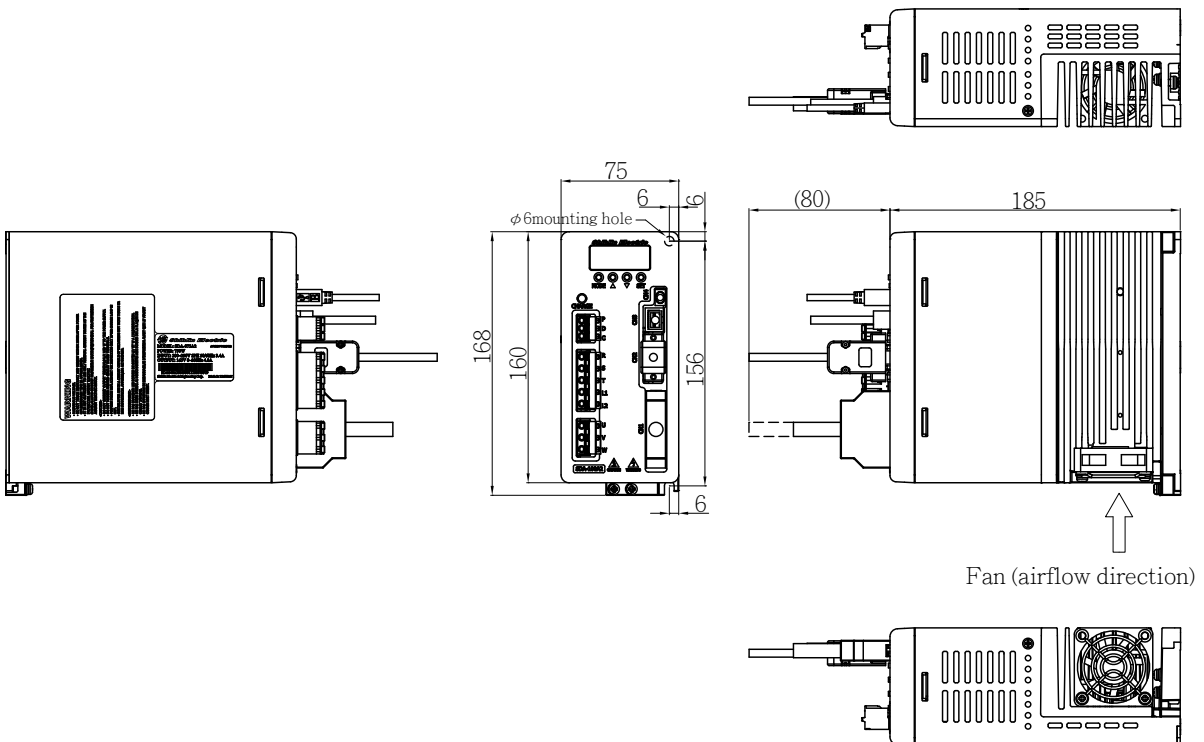
Servo Drives Dimensions

SDA-010A2、SDA-020A2、SDA-040A2、SDA-050A2 (100W~500W)

Unit : [mm]

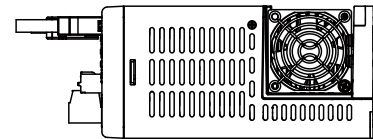
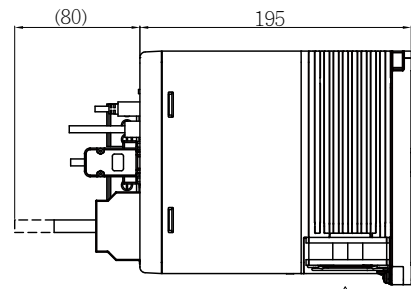
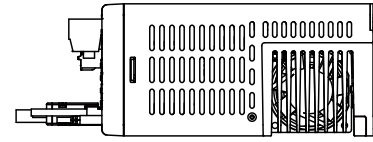
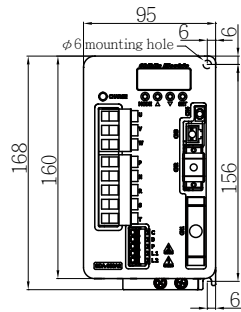
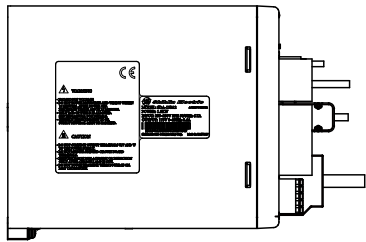


SDA-075A2、SDA-100A2 (750W、1KW)



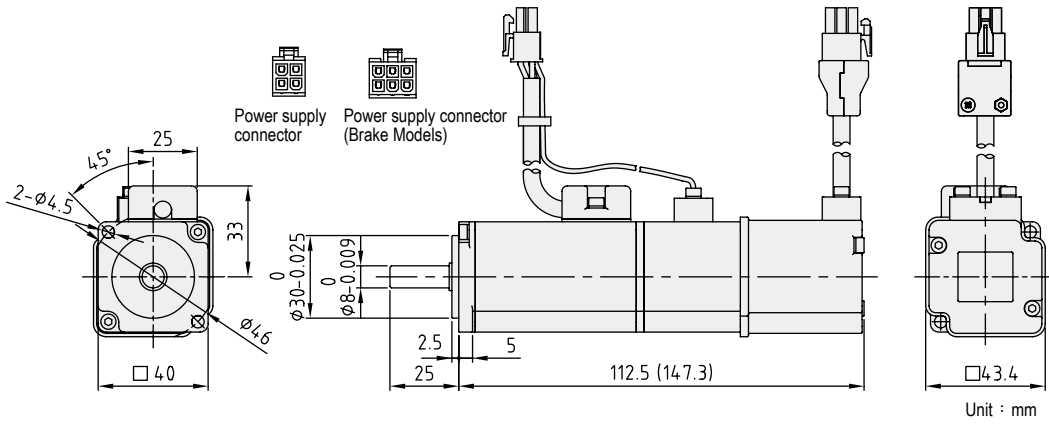
SDA-150A2、SDA-200A2、SDA-350A2 (1.5KW~3.5KW)

Unit : [mm]



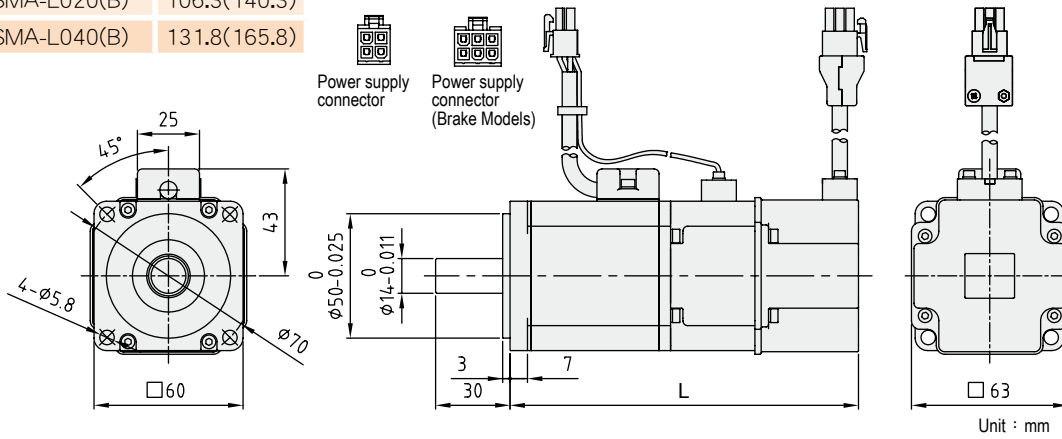
Servo Motors Dimensions

【 SMA-L010(B) 】

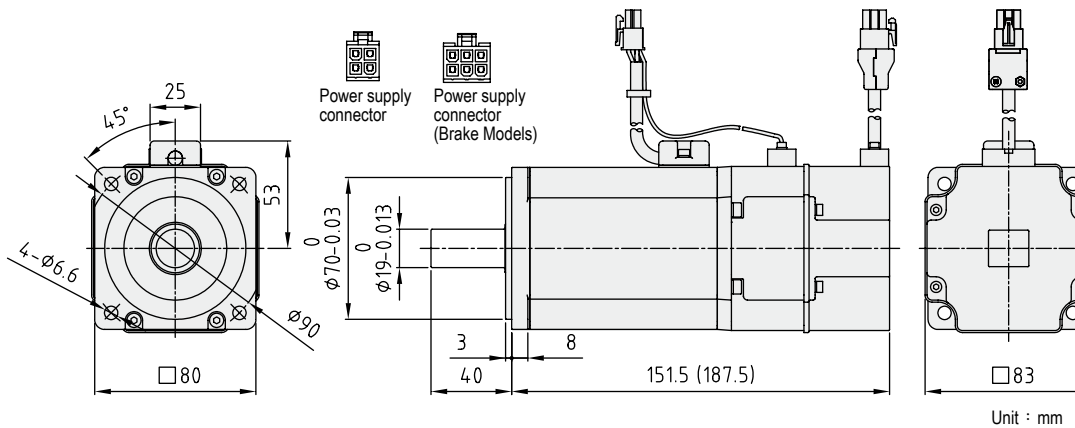


【 SMA-L020(B) 、 SMA-L040(B) 】

Model	L
SMA-L020(B)	106.3(140.3)
SMA-L040(B)	131.8(165.8)

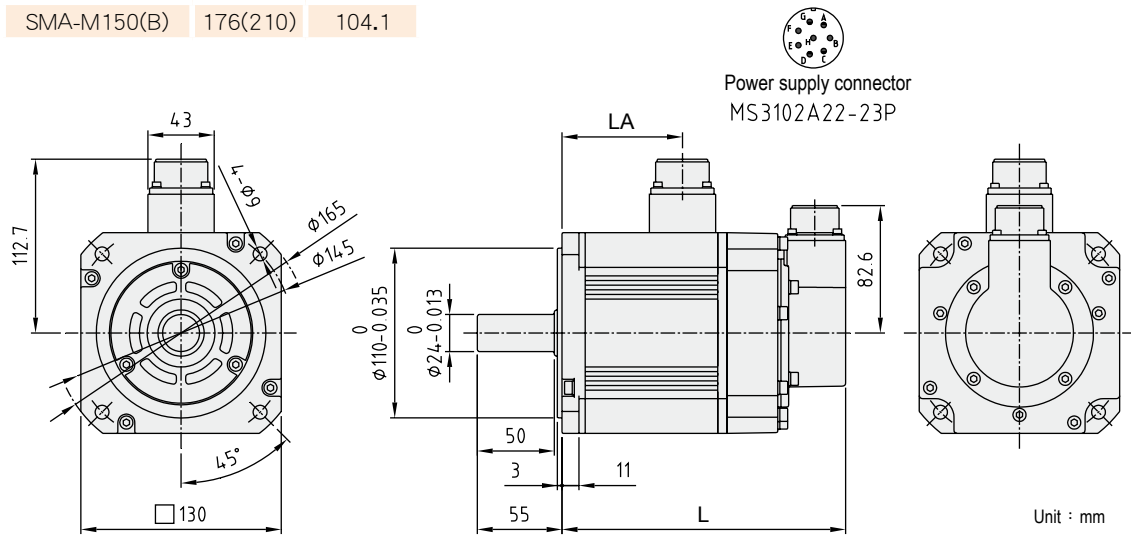


【 SMA-L075(B) 】



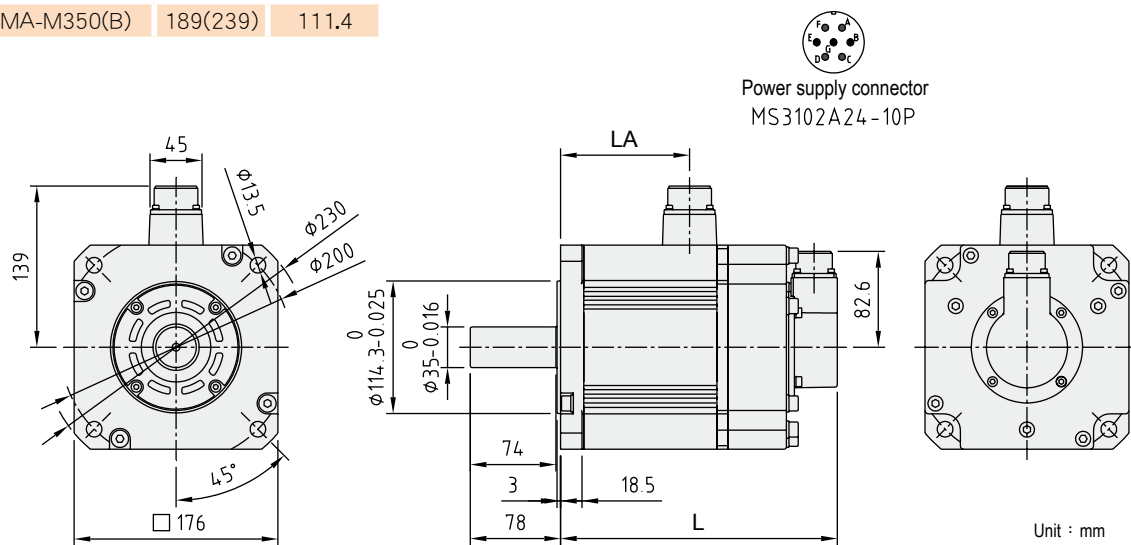
[SMA-M050(B) 、 SMA-M100(B) 、 SMA-M150(B)]

Model	L	LA
SMA-M050(B)	124(158)	52.1
SMA-M100(B)	150(184)	78.1
SMA-M150(B)	176(210)	104.1

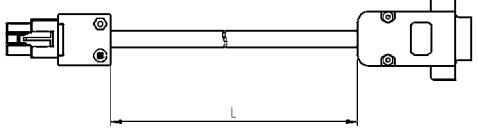

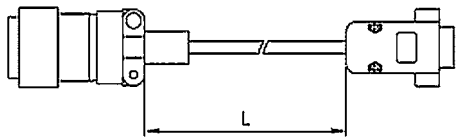

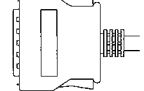
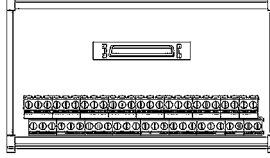
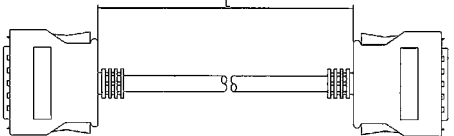
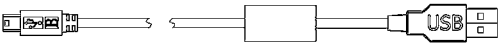
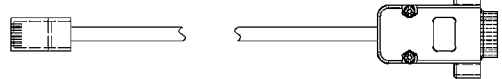
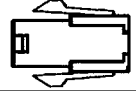
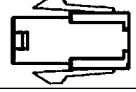
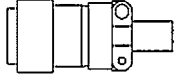



[SMA-M200(B) 、 SMA-M350(B)]

Model	L	LA
SMA-M200(B)	149(199)	71.4
SMA-M350(B)	189(239)	111.4



Optional Cables and Connectors

Name		Serial	Content
CN2: Select One only	SMA-L Encoder for low inertia motors Cable / Connector Set	SDA-ENLCBL□M-L □ The length of the cable inside 2, 5, 10 ... m (Note 1)	
		SDA-ENLCBL□M-H □ The length of the cable inside 2, 5, 10 ... m (Note 1)	
		SDA-ENCNL Connector set	
	SMA-M Encoder for medium inertia motors Cable / Connector Set	SDA-ENLCBL□M-H □ The length of the cable inside 2, 5, 10 ... m (Note 1)	
		SDA-ENLCBL□M-H □ The length of the cable inside 2, 5, 10 ... m (Note 1)	
		SDA-ENCNM Connector set	
CN1	I/O Connector	SDA-CN1	
	Terminal blocks and a wire set	SDA-TB50	
		SDA-TBL□M	
CN4	USB communication line	SDA-USB3M	
CN3	RS232/RS485 Communication line	SDA-RJ45-3M	
Power Connector	SMA-L Low Inertia Motor	SDA-PWCNL1	
	SMA-L Low Inertia Motor (with an electromagnetic brake)	SDA-PWCNL2	
	SMA-M Medium Inertia Motor (500W 、 1KW 、 1.5KW)	SDA-PWCNM1	
	SMA-M Medium Inertia Motor (For 2KW 、 3.5KW)	SDA-PWCNM2	

Note 1: L and H indicate bending life. L: standard, H: long bending life

Shihlin Electric

Factory Automation Products



Human Machine Interface

Temperature Controller

Servo Motors and Drives

AC Drives

Head Office:

16F, No. 88, Sec. 6, ChungShan N. Rd., Taipei, Taiwan, 111
TEL:+886-2-2834-2662 FAX:+886-2-2836-6187

HsinFun Factory (Taiwan):

No.234, ChungLun, HsinFun, HsinChu, Taiwan, 304
TEL:+886-3-599-5111 FAX:+886-3-5907173

SuZhou Factory(China):

No.22, HuoJu Rd., SuZhou Tech. District, JiangSu, China. 215009
TEL:+86-512-6843-2662 FAX: +86-512-6843-2669

Official website www.seec.com.tw

Automation Division website www.seecfa.com automation@seec.com.tw