

# Instructions for EC Simulator2

## 1. Start EC Simulator2

After starting **EC Simulator2**, an option box will appear. The model shall be selected as shown in figure 1.

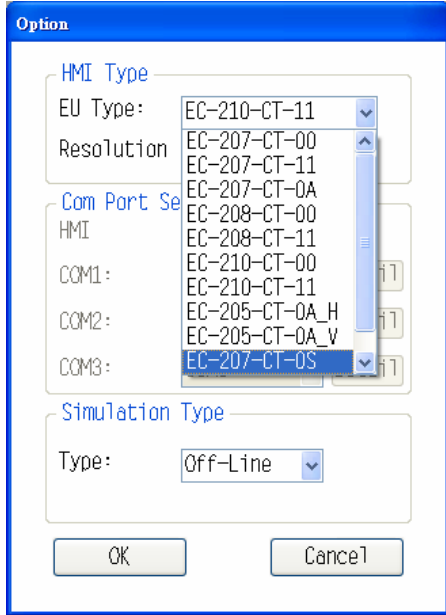


Figure 1: Select model

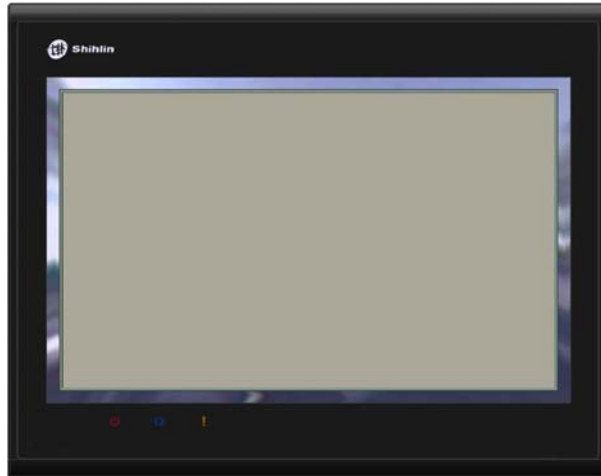
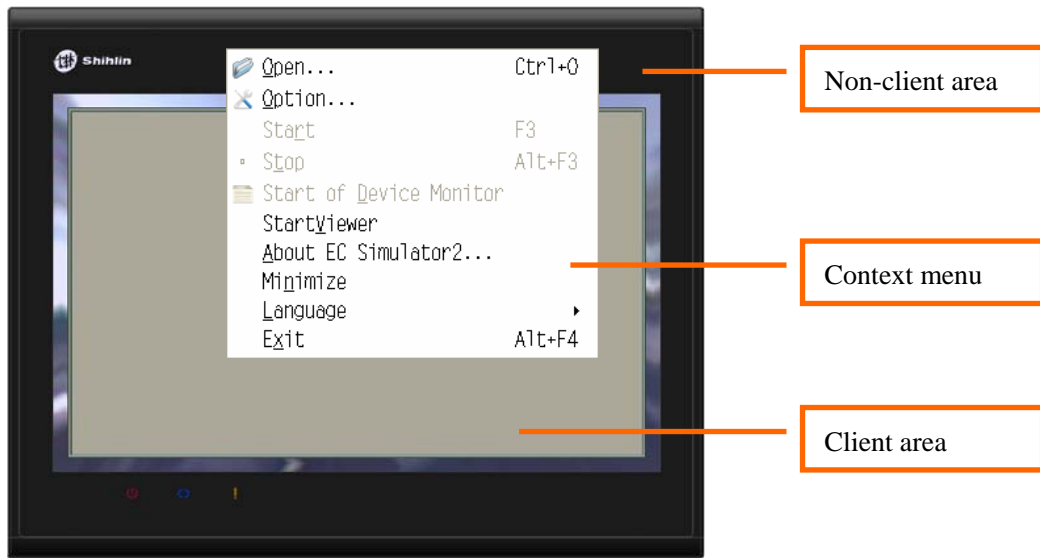


Figure 2: Simulation window

<b>HMI Type</b>	<p><b>HMI type:</b> There are 11 types of EC200 series available.</p> <p><b>Resolution:</b> It is used for displaying the size of the HMI selected currently.</p>
<b>Set COM port</b>	<p>When the simulation type setting, "On-Line", select the PC port (Figure 3) corresponds to the port in the HMI port, and then click the <b>Detail</b> button to set the communication parameters (Figure 4).</p> <div style="display: flex; justify-content: space-around;"> <div data-bbox="411 1429 836 1816"> </div> <div data-bbox="975 1357 1310 1816"> </div> </div> <div style="display: flex; justify-content: space-around; margin-top: 10px;"> <div data-bbox="443 1839 791 1877">Figure 3: Com port setting</div> <div data-bbox="868 1839 1410 1877">Figure 4: Communication parameters setting</div> </div>
<b>Simulation type</b>	<p><b>Off-Line :</b> HMI unit and HMI internal device action simulation.</p> <p><b>On-Line :</b> In addition to HMI unit and HMI internal device action simulation,the</p>

	PLC program can be on-line simulated by computer connection with PLC. On-Line simulation time is 10 minutes or less.
<b>Confirm</b>	After setting all required options, click “Confirm” to save settings, and a simulation window will appear, as shown in figure 2.
<b>Cancel</b>	Click “Cancel” to quit the simulation software. If the simulation window has been started, after opening the option box and clicking “Cancel”, it only quits the option box.

## 2. Functions of main window



Window description of simulation software

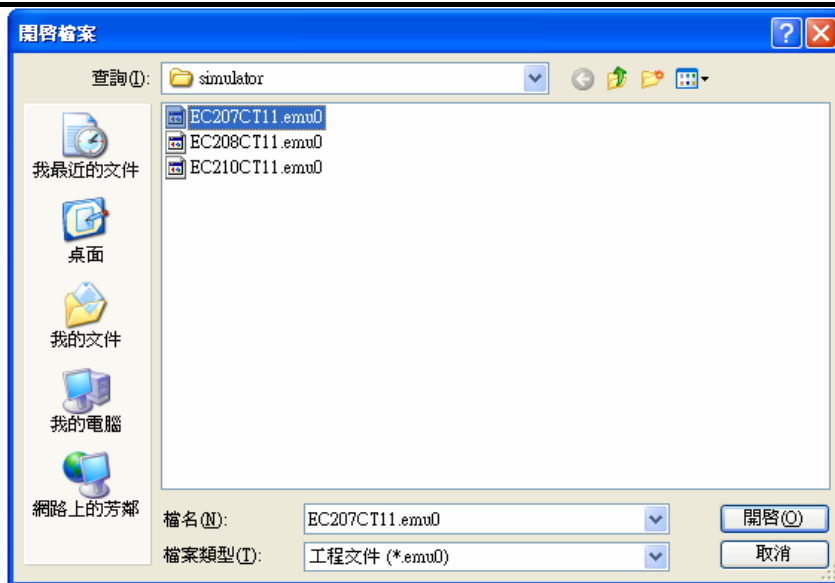
### Client area

It displays the project screen. Other areas other than this area are non-client areas.

### Context menu

When you click on the right mouse button in the non-client area of the simulation software, the context menu will appear. Its functions are described on the table:

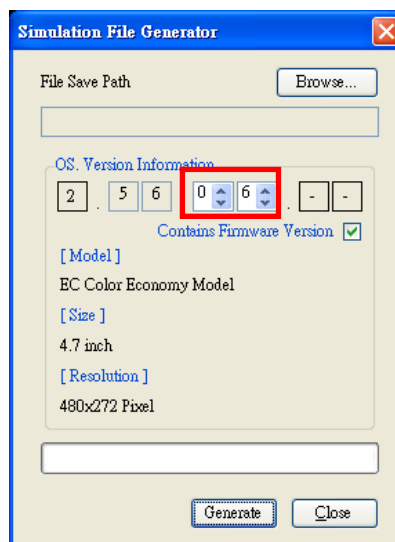
<b>Open</b>	Open the simulation file(.emu0) as shown the following figure . Once a simulation file is opened, you cannot set HMI type again.
-------------	--



Open the simulation file

Simulation files must be created by using the EU Editor2(Ver 2.6.4 above). In the “Simulation file generator” window, OS version information set ..06. above.

For details, please see section 3.8.4 in the software manual of EC200.



Simulation file generator

<b>Set</b>	Open the EC Simulator2 settings dialog box, function description please refer <b>1. EC Simulator2</b> chapters.
<b>Start</b>	Click it to start the monitoring function of the simulation software. If it is the offline simulation, it is to read and write the virtual memory of the software.

<b>Stop</b>	Click it to stop the monitoring function of the simulation software.
<b>Start of Device Monitor</b>	Click it to open or close the device monitoring function,description please refer <b>3. Start of Device Monitor</b> chapters.
<b>Start/Stop Viewer</b>	Click it to open or close the network monitoring function,description please refer <b>4. Start Viewer</b> chapters.
<b>About EC Simulator2</b>	Click it to display the version of the simulation software.
<b>Minimize</b>	Click it to minimize the simulation software.
<b>Language</b>	Click it to select one of the four languages, like Chinese traditional, Chinese simplified, English and Japanese.
<b>Exit</b>	Click it to close the simulation software.



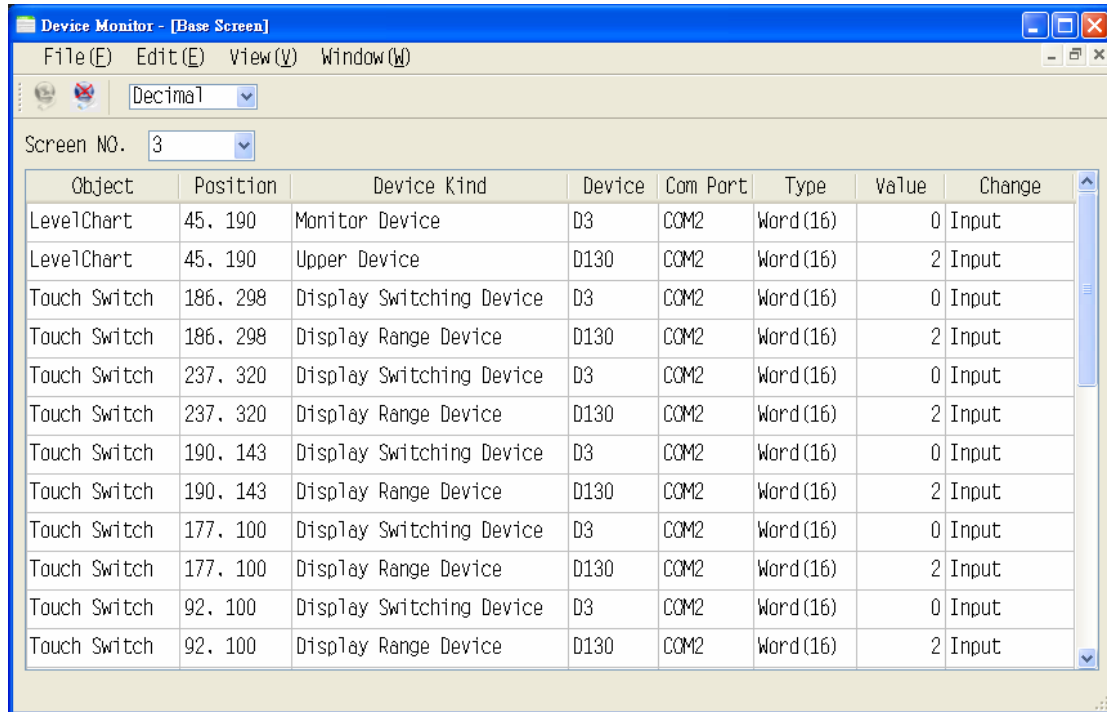
- EC Simulator2 software does not support external storage function (USB / SD).
- If open system screen on the EC Simulator2, EC205 models support the "Serial setup" function of communication setting, the remaining models support "Serial setup" function of communication settings, and the "Touch sound" function of system setting, and the "Password Setting" of power setting.



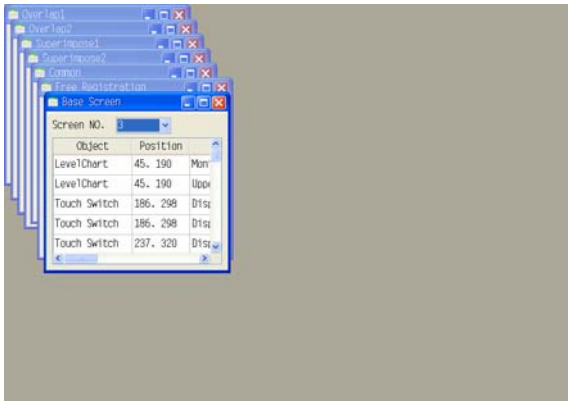
System Screen

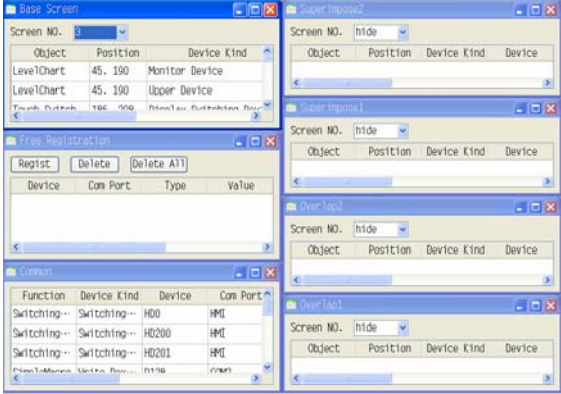
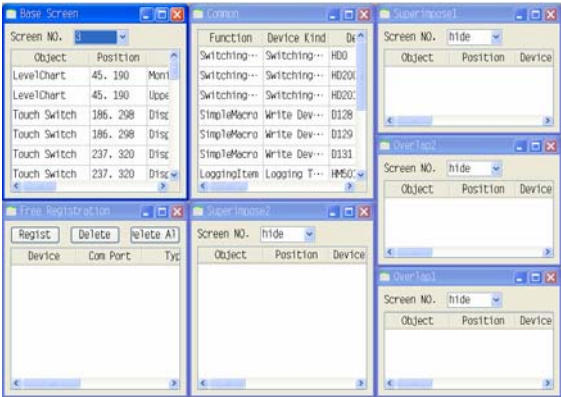
### 3. Start of Device Monitor

Open the device monitor list, device information of the current screen displayed in the list.



Device monitor function description :

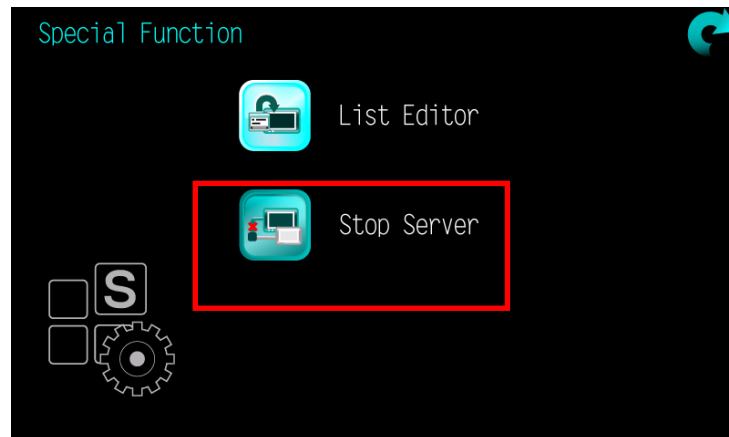
Name		Description
File	Exit Device Monitor	Close Device Monitor window.
View	Monitor	Connect or disconnect device Monitor.
Window	Cascade	

	Horizontal	
	Vertical	
Format	Format setting of numeric field, To provide binary, octal, decimal and hexadecimal choose.	
Screen NO.	To switch device list of Specify Screen.	

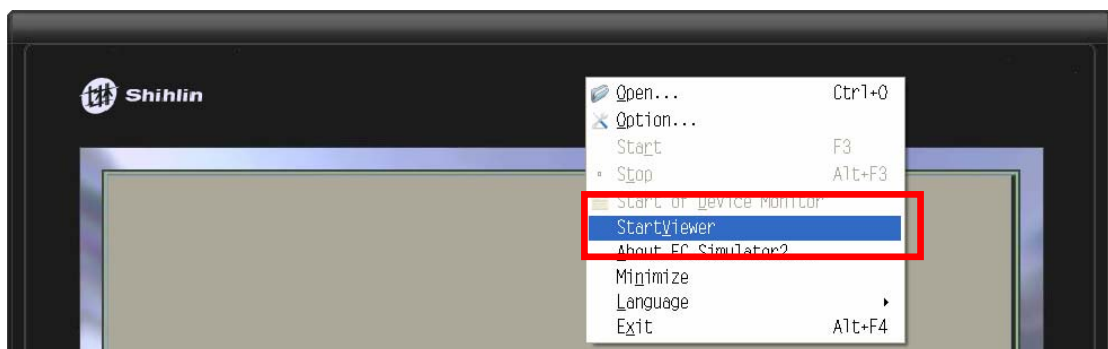
#### 4. Start/Stop Viewer

This function must be used together with the server function. It is only available when the server is started in the HMI. A HMI and the simulation software can be operated and displayed simultaneously. Its steps are described as follows:

1. HMI: Special function\Start server

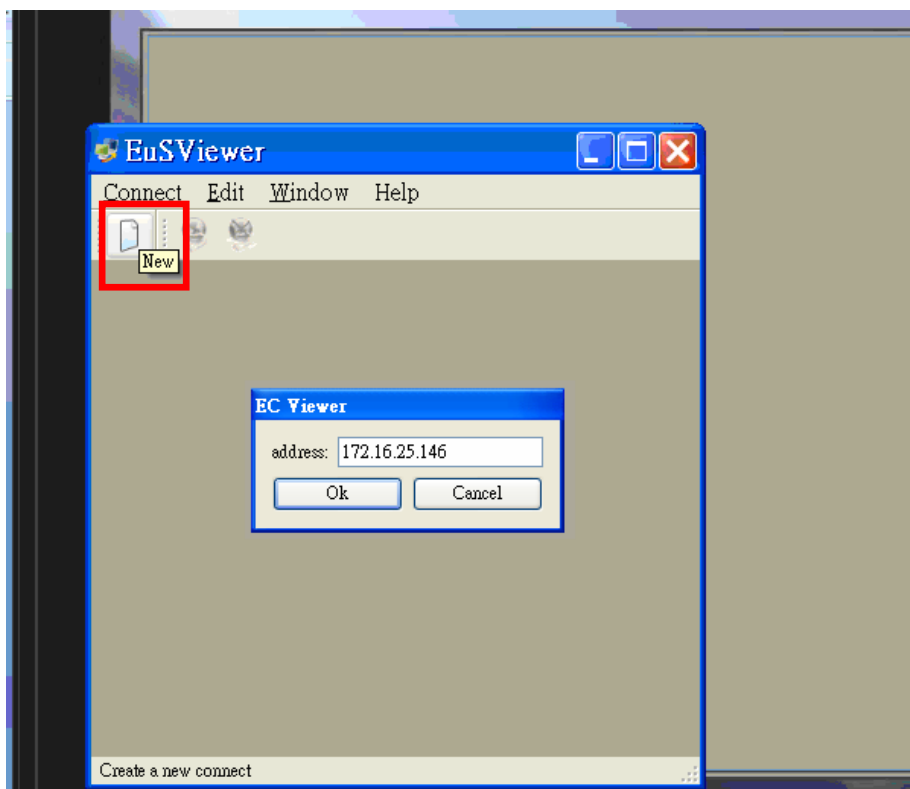
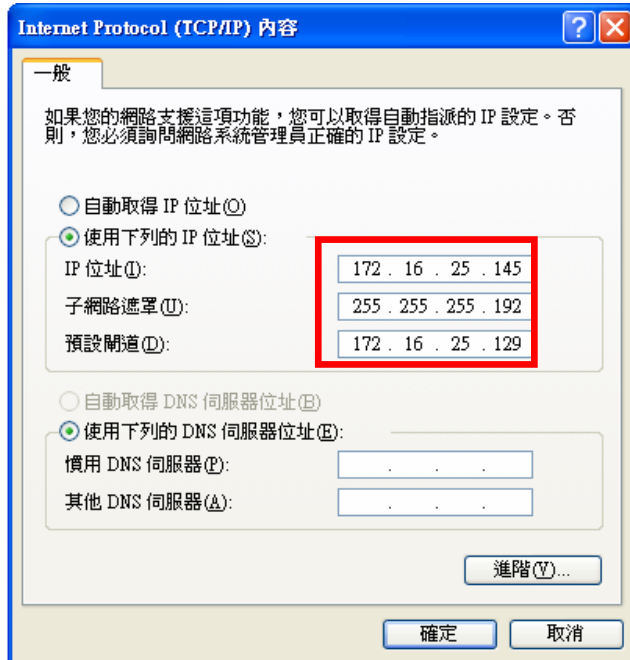


2. Simulation software: Move the mouse the top right and click on the right mouse button to call out the context menu, and then click the “Start/Stop Viewer” to start link function (to cancel link function in the same way).



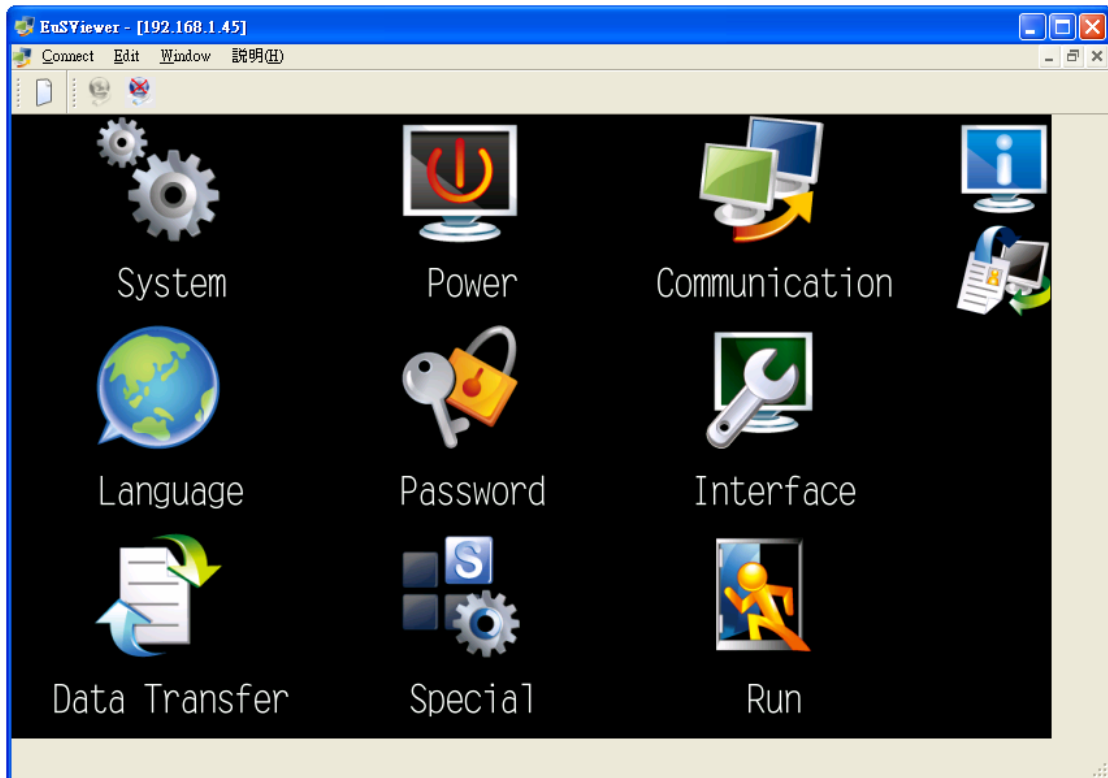
3. Simulation software: After starting the link setting window, Click the “New” button and enter IP address, and then click the “OK” button to start the remote monitoring screen. The IP address is set as follows:

Local network IP address (Internal local network of Shihlin Electric) is set as follows:





4. Simulation software: The server screen is successfully started.



Window description of viewer:

Name		Description
Connect	New	Click it to connect to a new server.
	Exit	Click it to quit the remote monitoring function.
Edit	Reconnect	Click it to reconnect the server.
	Disconnect	Disconnect the server.
	Language	Click it to select one of the four languages, like Chinese traditional, Chinese simplified, English and Japanese.
Window	Close	Click it to close the remote monitoring window.
Help	About	Click it to give an outline of the remote monitoring function.
Screen viewing area		The viewing area displays the server screen in real time, and you can operate the server screen in the viewing area.
Status bar		The status bar is below the left side of the window, and displays the position of the cursor mark and the outline of items in the context menu.